

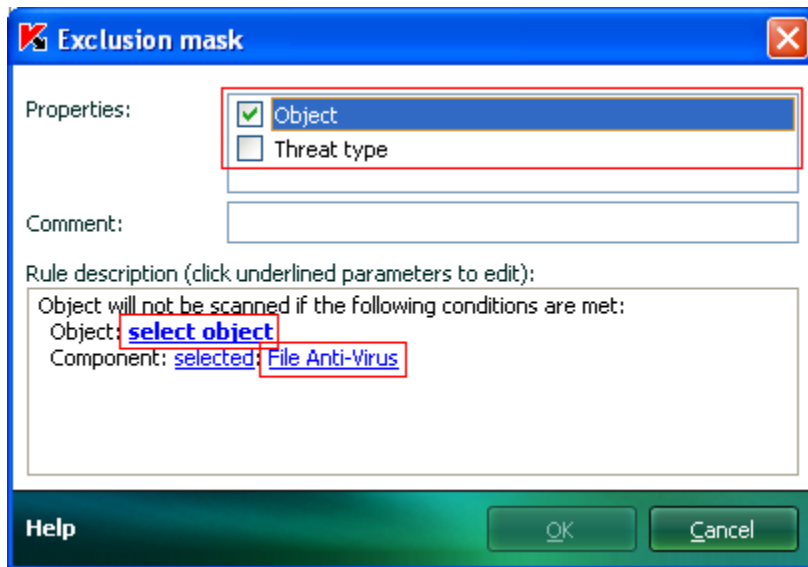
# Kaspersky Exclusion Rules

From Menu select “Settings”, then select top left Folder looking Icon. Naturally, course check Internet if you can’t find where to do it.

## How to create an exclusion rule

To create an exclusion rule:

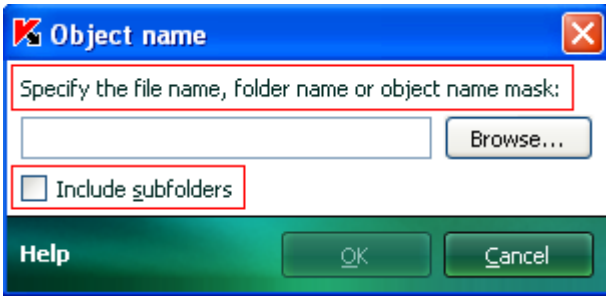
1. Open the application settings window.
2. Select **Protection** on the left.
3. Click the **Trusted Zone** button in the **Exclusions** section.
4. Go to the **Exclusion rules** tab and click **Add**.



5. Select an exclusion type in the **Properties** field: **Object** and/or **Threat type**.

- **Object**

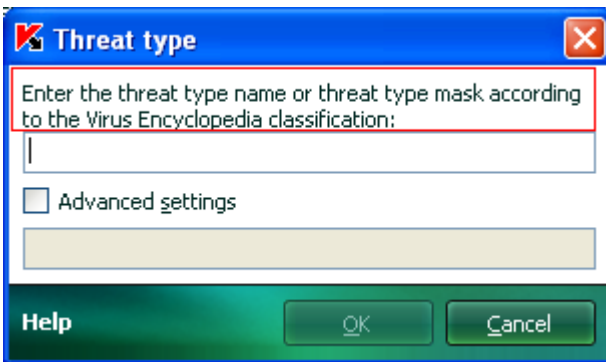
Click **select object** and choose a file, a folder or a mask to exclude.



Select a **Component** in the corresponding field. The rule will apply to the selected component.

- **Threat type**

Click **Enter threat type** to select a file, a folder or a mask to exclude.

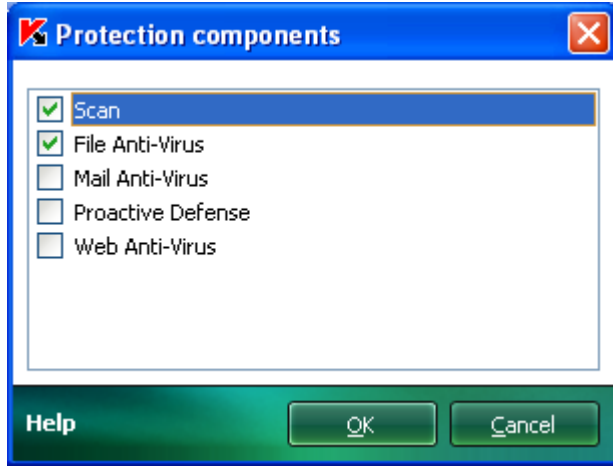



Select a **Component** in the corresponding field. The rule will apply to the selected component.

Rules can be applied to the following [protection components](#):

- Scan,
- File Anti-Virus,
- Mail Anti-Virus (*Kaspersky Anti-Virus 6.0 for Windows Workstations 6.0.4.x only*),
- Proactive Defense (*Kaspersky Anti-Virus 6.0 for Windows Workstations 6.0.4.x only*),

- Web Anti-Virus (*Kaspersky Anti-Virus 6.0 for Windows Workstations 6.0.4.x only*).



 An excluded object will not be scanned, when the folder/disk containing this objects is scanned. Yet you can force scanning of the excluded objects in the context menu (by right-clicking the object).

**To create an exclusion rule in the report window:**

- Right-click the report object you want excluded.
- Choose the **Add to Trusted Zone** option.

An **Exclusion rule** window will open. Make sure that you are satisfied with the new exclusion rule settings. The **Object name** and **Threat type** fields are assigned automatically on the basis of the report data. Click **OK** to create the rule.