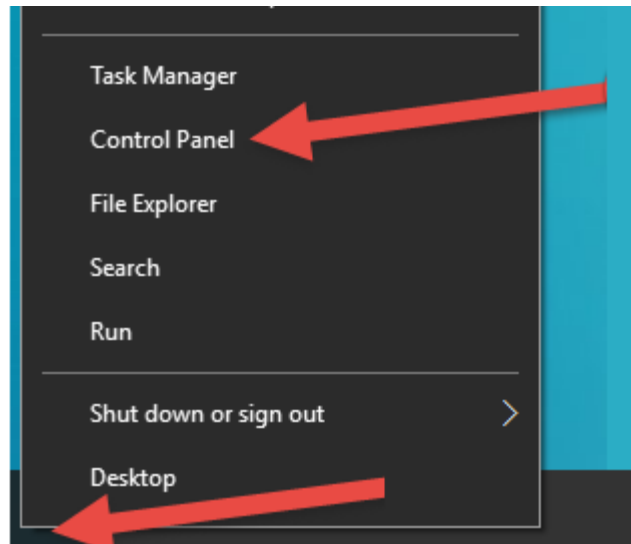
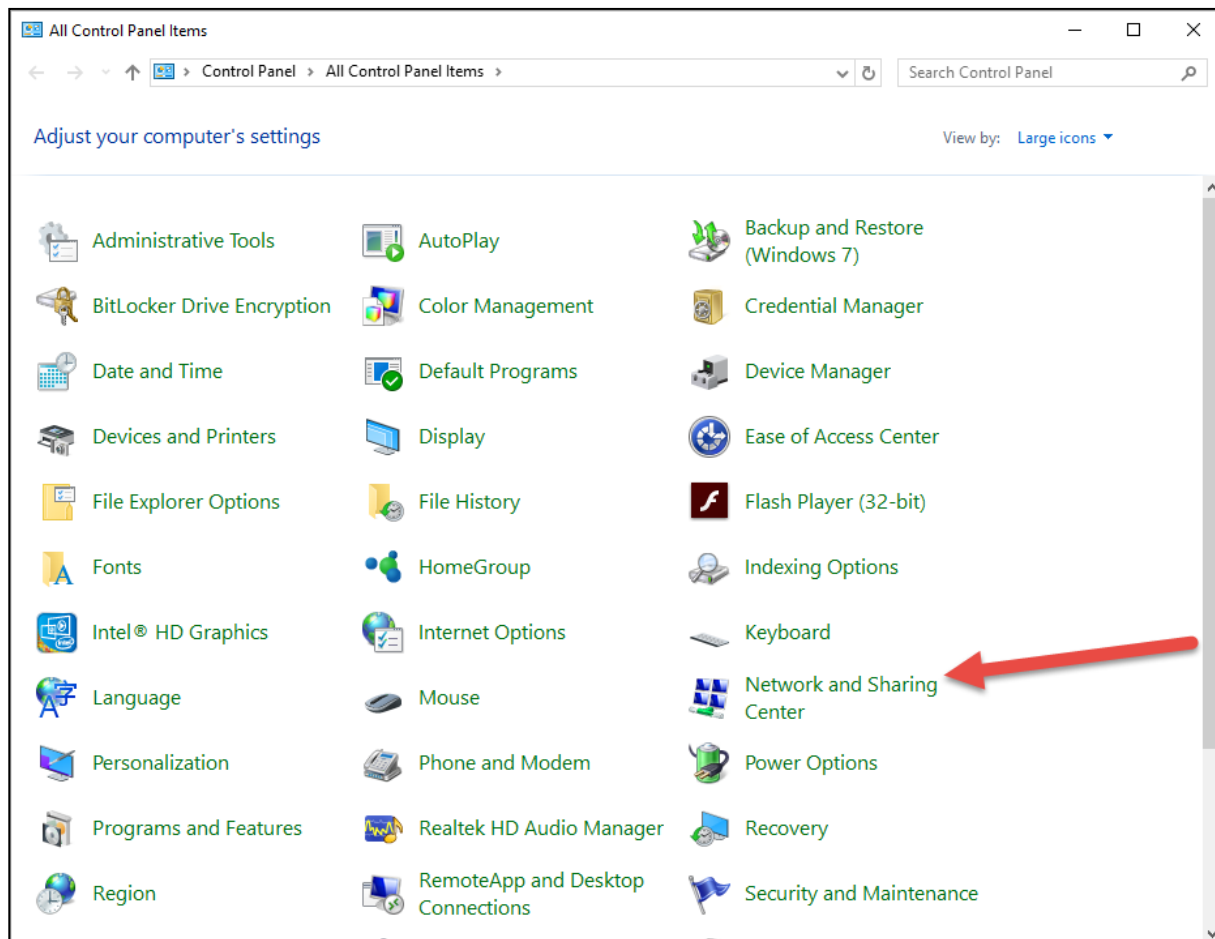


Windows 10 Network Set Up

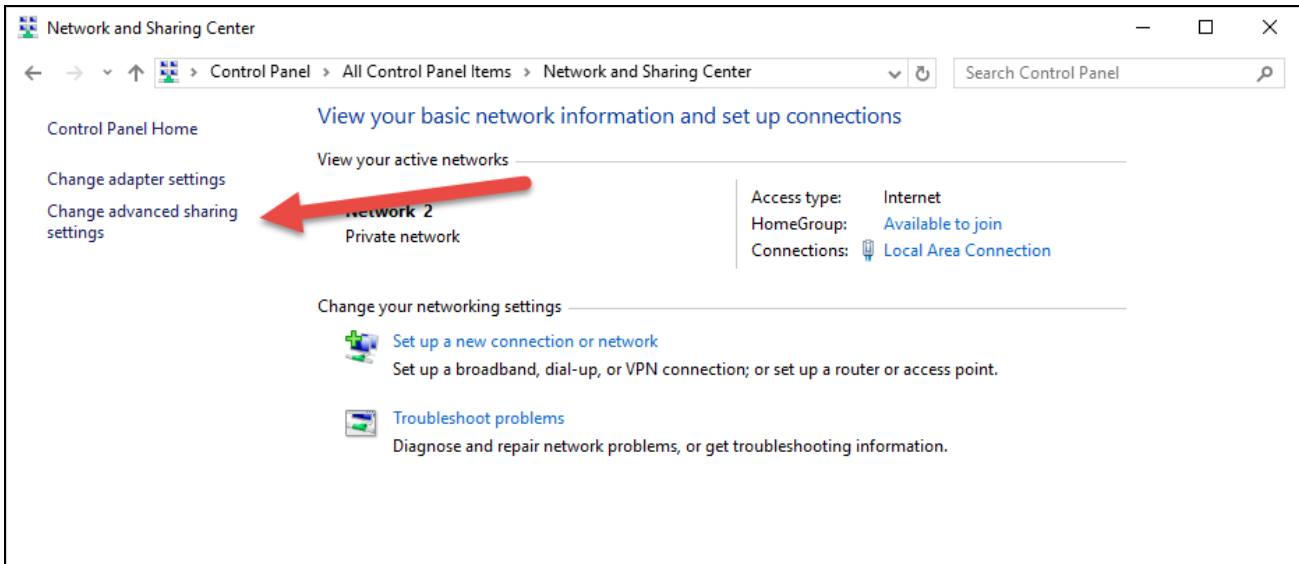
1. Right click the Start button, Click **Control Panel**



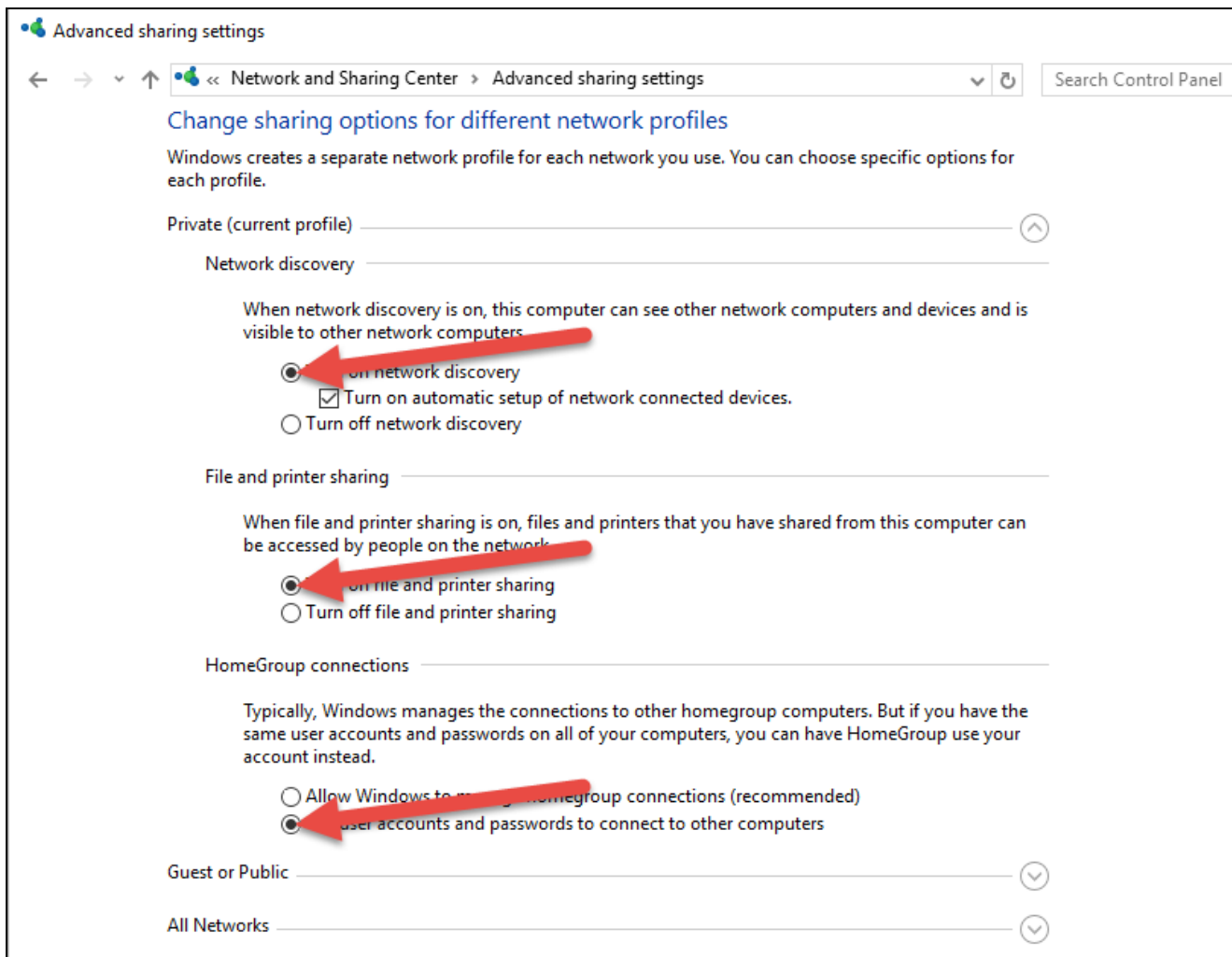
2. Click **Network and Sharing Center**



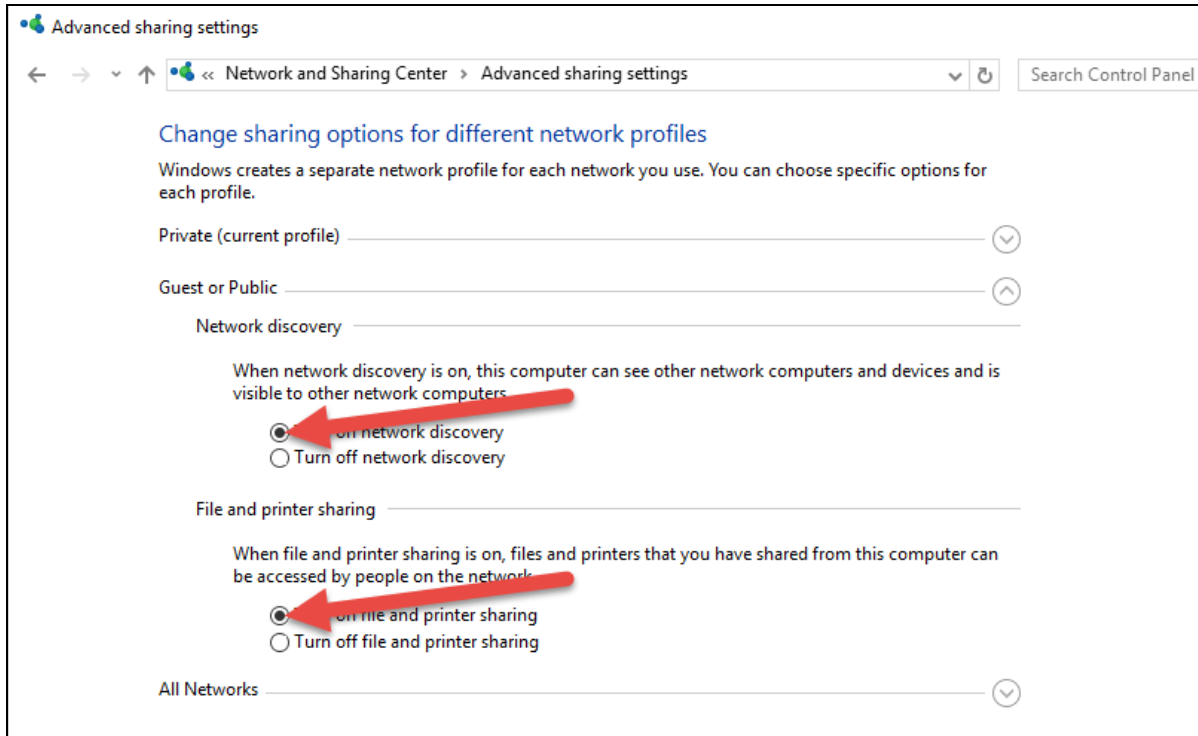
3. Click **Change Advanced Sharing Settings**



4. In the Private section, select **"Turn On Network Discovery"**, **"Turn On File and Printer Sharing"**, & **"Use User Accounts and Passwords"**



5. In the Guest or Public Section, Select "Turn On Network Discovery", & "Turn On File and Printer Sharing"



6. In the All Networks section, Select "Turn on Sharing so Anyone with Network Access can Read and Write Files in the Public Folders", & "Turn Off Password Protected Sharing"

